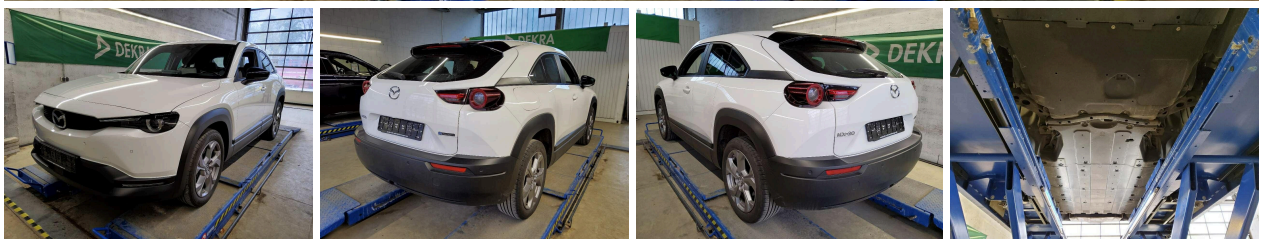


# Mazda MX-30

## MX-30 e-SKYACTIV e-SKYACTIV

Electric - Automatic - 29728km - 10/2021

Ref 61886



[All images](#)

# Mazda MX-30

## MX-30 e-SKYACTIV e-SKYACTIV

Electric - Automatic - 29728km - 10/2021

Ref 61886

---

### Description

Make	Mazda
Model	MX-30
Description	MX-30 e-SKYACTIV e-SKYACTIV
Mileage	29728 km
Type	Passenger car
Body type	SUV / Off-Road
Doors	5
Seats	5
Exterior color	White
Interior color	Grey
Upholstery	Cloth

### Technical

Fuel type	Electric	Gears	1
Gearbox	Automatic	Cylinders	0
Cylinder capacity	0 cc	Horse power	146 hp
Power KW	107 kw		
Drive train	Front		

### Dimensions

Weight empty	1720 kg
--------------	---------

# Mazda MX-30

## MX-30 e-SKYACTIV e-SKYACTIV

Electric - Automatic - 29728km - 10/2021

Ref 61886

---

## Registration and Warranty

First Registration 31-10-2021

Warranty start 31-10-2021

Battery Warranty start 31-10-2021

## Options

### Comfort

Automatic climate control

Electric windows rear

Steering wheel leather

Central locking

Armrest

Electric windows front

Head-up display

Sensor rain

Steering power

Luggage protection cover

### Safety

Cruise control

Parking assist camera

Parking assist sensor rear

Alarm

ABS

Emergency brake assist

Electronic parking brake

Airbag passenger

Isofix

Lights LED

Parking assist sensor front

Immobilizer

Lights LED daytime running

Emergency call

Lane departure warning system

Airbag driver

Airbags side

Tire pressure monitoring

### Infotainment

Apple CarPlay / Android Auto

Bluetooth

Navigation system

Multifunctional steering wheel

### Extras

Sport steering wheel

---

# Mazda MX-30

## MX-30 e-SKYACTIV e-SKYACTIV

Electric - Automatic - 29728km - 10/2021

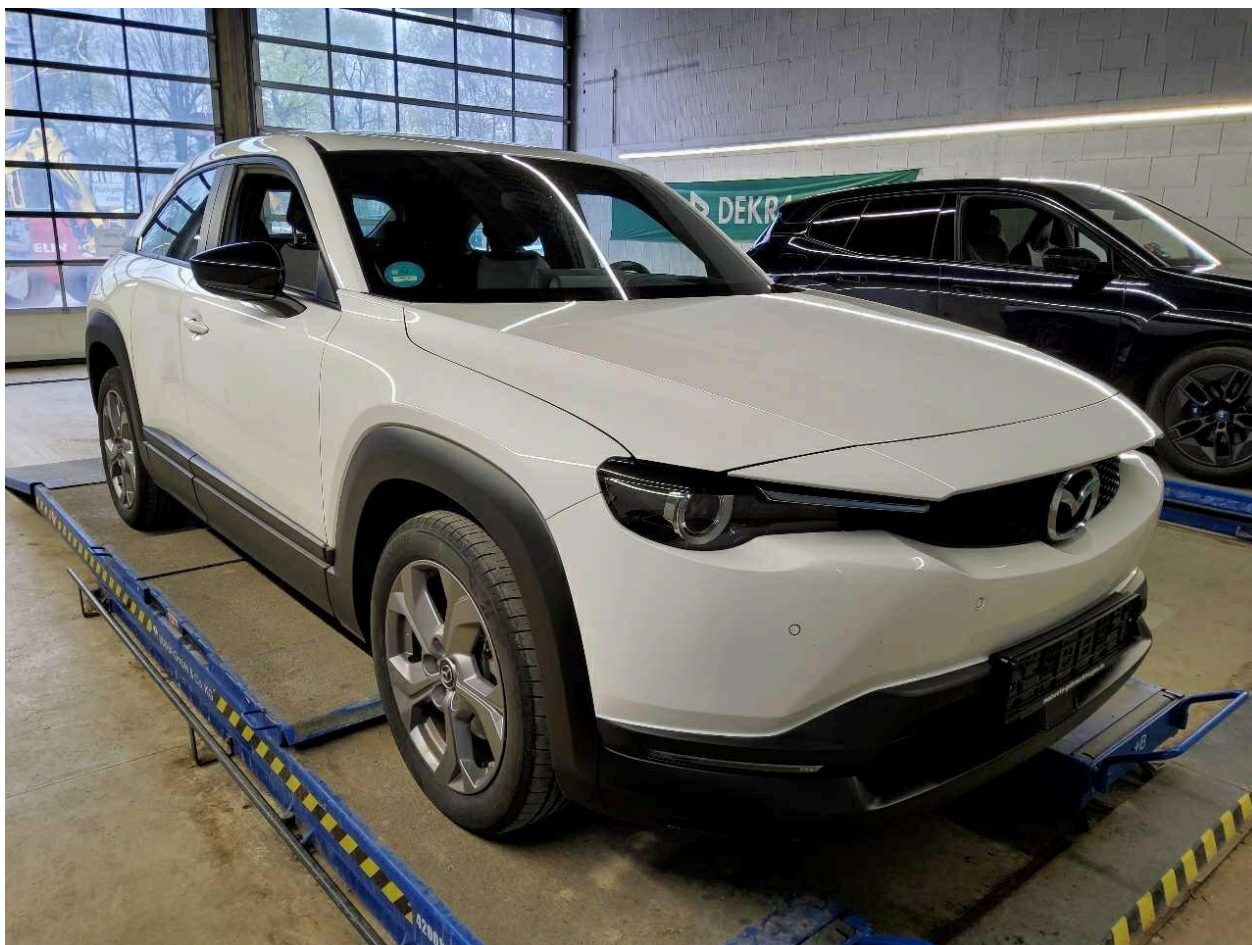
Ref 61886

### Equipment

Front seat belt tensioners	Driver assistance system: Driver Attention Alert (DAA)
Isofix mounts for child seat	Windshield antenna
Driver assistance system: High Beam Assist (HBC)	Color glazing
Driver's side knee airbag	Driving assistance system: Lane departure warning system
Voice control, extended functionality	Active Info Display (digital instrument display)
Electrically adjustable exterior mirrors, both	Wheelbase 2655 mm
Advanced head-up display	Driving assistance system: Emergency Brake Assist
Anti-lock braking system (ABS)	Luggage compartment cover / roller blind
Electric parking brake	Black headlining
Driver assistance system: Blind Spot Monitor Plus (BSM)	Driver assistance system: G-Vectoring Control Plus with brake intervention
Driver assistance system: Hill Start Assist (HLA)	Front side airbag
Front parking aid	Electric motor 107 kW (cont. 81 kW)
Rear outer seatbelt pretensioners	Audio system with 8 speakers
Adaptive Cruise Control (ACC) with Traffic Jam Assist (MRCC)	Driver assistance system: Rear Cross Traffic Alert (RCTA)
Steering column (steering wheel) mech. height/length adjustment	Sun visors with make-up mirror
Dynamic Stability Control (DSC)	Electro-hydraulic power steering
High-gloss black exterior mirrors	LM rims
Sound simulator (Acoustic Vehicle Alerting System, AVAS)	Emergency call system
Height-adjustable front seat belts	Drive type: Front-wheel drive

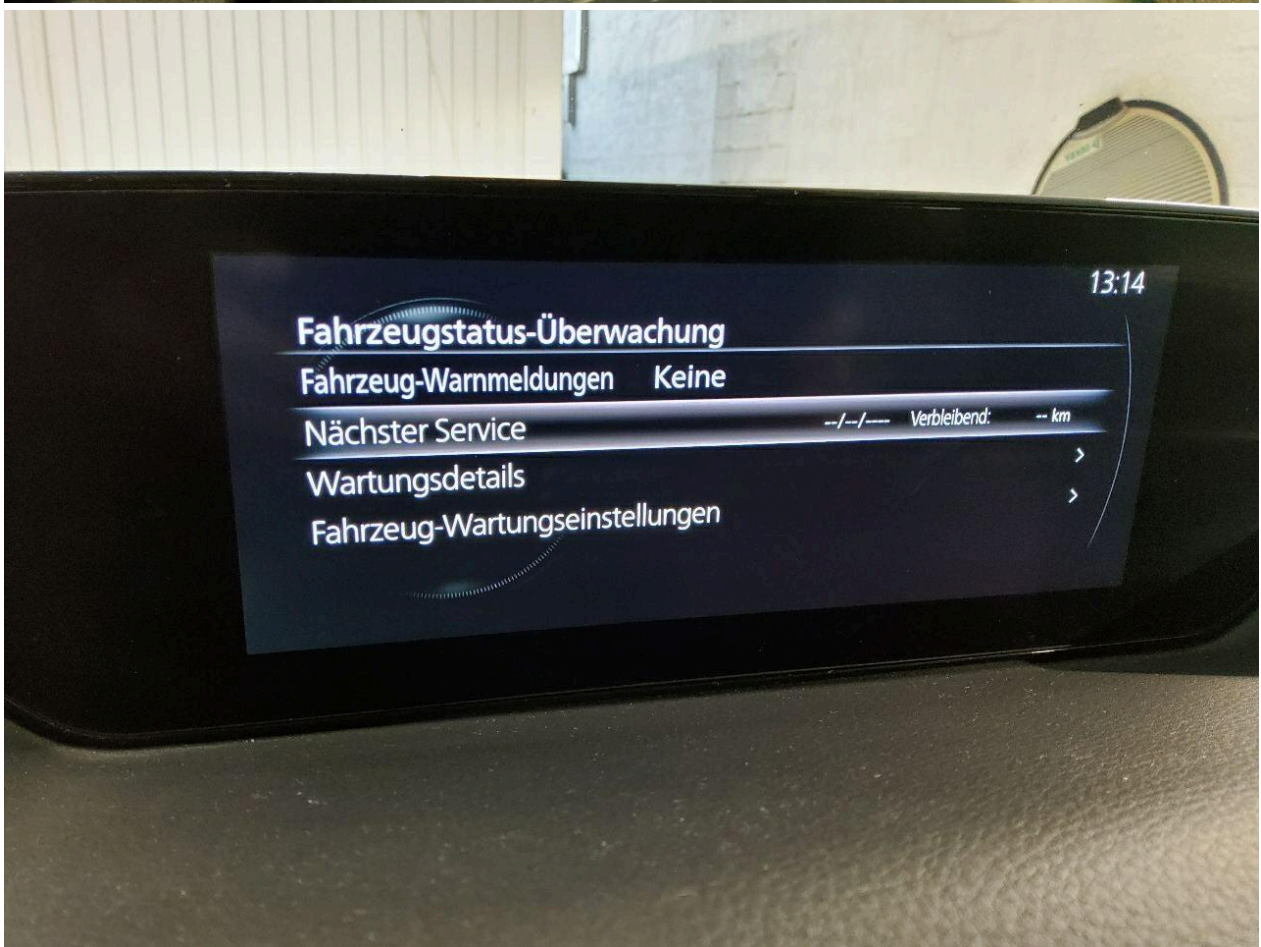
Front left seat height/tilt adjustable	Driver assistance system: City emergency braking function (SCBS): Driver assistance system: Pedestrian detection
Hands-free system with voice control and Bluetooth	Multi-Commander
Digital radio reception (DAB+)	Color display (8.8 inches)
Split/folding rear seat backrest	LED rear lights
Airbag driver/passenger side	Automatic seat belts in front and rear
Front and rear head/shoulder airbags	Charging cable with type 2 plug (mode 2)
Light assistant (Coming Home, Leaving Home)	Immobilizer (electronic)
Transmission for electric vehicle	Driving assistance system: Traffic sign recognition (TSR)
Reversing camera	Navigation system: SD card navigation
Tire repair kit	Windshield wipers with rain sensor
Leather gearshift/selector lever handle	Automatic switch-on for headlights
Driving assistance system: Blind Spot Assist	Power windows front and rear with convenience control
Electric brake force distribution (EBD)	Charging cable with type 2 plug (mode 3)
Airbag passenger side can be switched off	Front right seat height/recline adjustable
Emergency Stop Signal (ESS)	Rear parking aid
35.5 kWh HV battery (lithium-ion)	USB interface
Steering wheel (Sport/leather, 3-spoke) with multifunction controls, cruise control buttons, and paddles for battery regeneration	Advanced smartphone integration (Apple CarPlay and Android Auto)
3rd brake light	Front center armrest
Body: 5-door	Automatic climate control
Seat cover / upholstery: Fabric	LED headlights
Alarm system	LED interior lighting
Daytime running lights LED	Central locking with remote control
Tire pressure monitoring system	

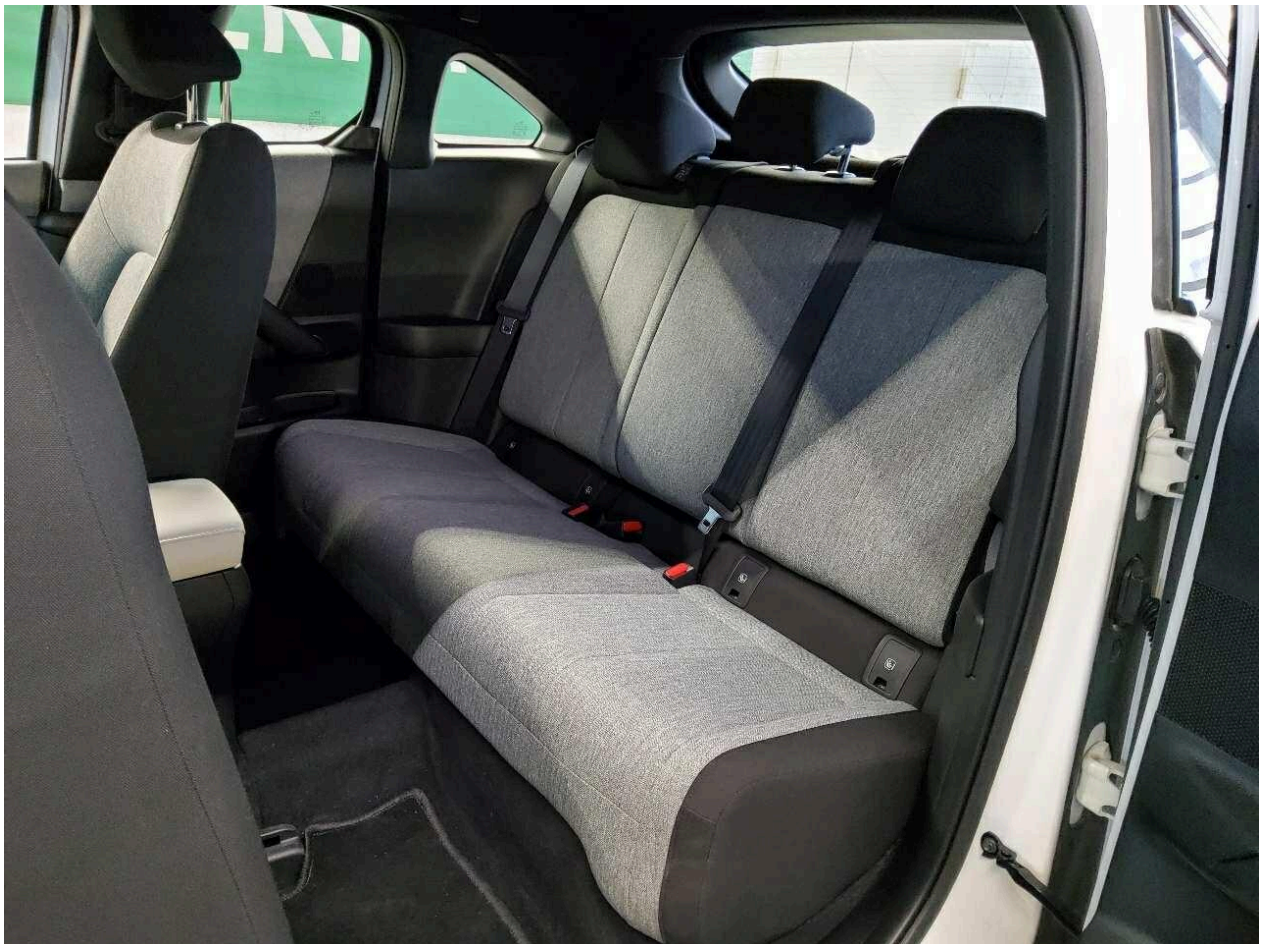
## Image gallery















mazda Care / Care Plus Keine Deckung  
Keine Deckung

**Fälligkeit der nächsten Wartung**  
Flexible Wartungsanzeige

Bitte beachten Sie: Die SKYACTIV Technologie berechnet die Fälligkeit der nächsten Wartung anhand der Einsatzbedingungen. Die Schraubenschlüssel-Kontrollleuchte wird spätestens 1.000 km oder 15 Tage vor der erforderlichen Wartung aktiviert. Geschätzte Werte siehe unten.

Service-Intervalle Flexible Wartungsanzeige, spätestens alle 20.000 km oder 12 Monate (je nachdem was, zuerst eintritt). Die Herstellergarantie oder die Deckung der Neuwagen Anschlussgarantie kann erlöschen, wenn die vorgesehenen Wartungsintervalle nicht nach Herstellervorgabe eingehalten werden.

Nächste fällige Wartung Erwartet am 5. Wartung  
Spätestens bei 46100 km oder 26/11/2026  
46100 km oder 26/11/2026 (je nachdem, was zuerst eintritt)

Vorherige Serviceleistungen	Auftragsdaten	km-Stand	Wartung durchgeführt
MMD, Autohaus Kummich GmbH Plattenwaldallee 56 DE - 71522 Backnang +4971919033180	26/11/2025 <small>14109952</small>	26100 km	80.000 km / 50.000 Meilen / 4. Jahr 
MMD, Autohaus Kummich GmbH Plattenwaldallee 56 DE - 71522 Backnang +4971919033180	10/12/2024 <small>14106450</small>	16968 km	60.000 km / 37.500 Meilen / 3. Jahr 
MMD, Autohaus Kummich GmbH Plattenwaldallee 56 DE - 71522 Backnang +4971919033180	10/11/2023 <small>14101433</small>	7141 km	40.000 km / 25.000 Meilen / 2. Jahr 

Gedruckt am 26/11/2025 12:32 von MMD/16314 (Sicherheitskodierung: AUBHDE20251126) 1 / 2

