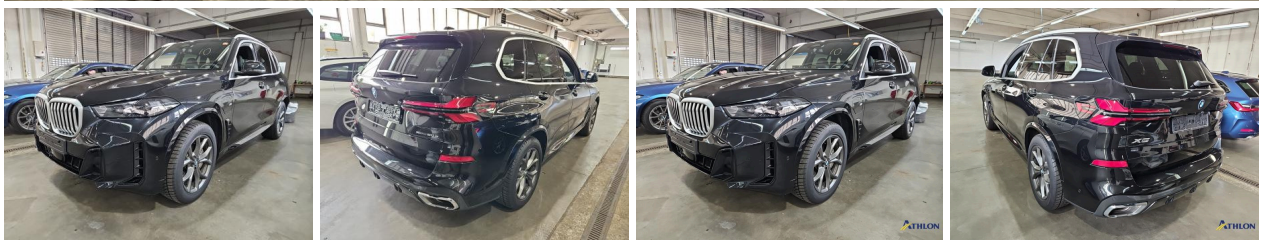


BMW X5

X5 xDrive50e xDrive M Sport (EURO 6d) 3.0 Plugin Hybrid (Benzin) 313hp xDrive

Plug-in Hybrid Gasoline - Automatic - 37242km - 11/2024

Ref 62280



[All images](#)

BMW X5

X5 xDrive50e xDrive M Sport (EURO 6d) 3.0 Plugin Hybrid (Benzin) 313hp xDrive

Plug-in Hybrid Gasoline - Automatic - 37242km - 11/2024

Ref 62280

Description

Make	BMW
Model	X5
Description	X5 xDrive50e xDrive M Sport (EURO 6d) 3.0 Plugin Hybrid (Benzin) 313hp xDrive
Mileage	37242 km
Type	Passenger car
Body type	SUV / Off-Road
Doors	5
Seats	5
Exterior color	Black
Interior color	Black
Upholstery	Full leather

Technical

Fuel type	Plug-in Hybrid Gasoline		
Gearbox	Automatic	Gears	8
Cylinder capacity	2998 cc	Cylinders	0
Power KW	230 kw	Horse power	313 hp
Drive train	AllWheel		

Dimensions

Weight empty	2420 kg
--------------	---------

BMW X5

X5 xDrive50e xDrive M Sport (EURO 6d) 3.0 Plugin Hybrid (Benzin) 313hp xDrive

Plug-in Hybrid Gasoline - Automatic - 37242km - 11/2024

Ref 62280

Registration and Warranty

First Registration 24-11-2024

Warranty start 24-11-2024

Options

Comfort

Seat heating front

Start/stop system

Ambient lighting

Safety

Parking assist camera

Alarm

Tire pressure monitoring

Infotainment

DAB radio

Extras

Sport seats

Roof rack

BMW X5

X5 xDrive50e xDrive M Sport (EURO 6d) 3.0 Plugin Hybrid (Benzin) 313hp xDrive

Plug-in Hybrid Gasoline - Automatic - 37242km - 11/2024

Ref 62280

Equipment

Service system: Intelligent emergency call incl. TeleServices	Interior trim: Poplar burl wood in anthracite-brown (open-pore)
Driving assistance system: Driving experience switch	Induction charging cradle for smartphone (wireless charging)
Two-piece tailgate	Air suspension with level control
Illuminated radiator grille (Iconic Glow)	Velour floor mats
Lumbar support, front left seat	Steering wheel (Sport/Leather M-Technic) with multifunction
Cruise control system with brake function	Exterior mirror package (extended): Electrically adjustable and heated exterior mirrors, electrically folding exterior mirrors, all mirrors with automatic dimming, exterior mirrors with curb-sensing function, right
Luggage compartment partition (net)	M-Technic aerodynamics package
Driving assistance system: Active Guard (Brake Assist)	Comfort access (opening and closing system)
Adaptive suspension M-Technic	Anti-theft device for wheels (rim locks)
Driving assistance system: Attention Assist	BMW front sports seats, electrically adjustable (left with memory)
HiFi loudspeaker system	Fast charging device Flexible Fast Charger (Mode 2)
Engine 3.0 ltr. - 230 kW (system: 360 kW) Hybrid: Hybrid 360 kW (engine 3.0 ltr. - 230 kW)	Active Protection safety system
Low-emission according to Euro 6e emissions standard	Driving assistance system: High beam assistant
Start/stop system (function)	Drive type: All-wheel drive
Dynamic Stability Control (DSC) with extended scope	Sport-Automatic transmission - with Steptronic (8-speed)
Brake energy recovery (recuperation system)	Equipment package: Connected Professional

Parking Assistant Package: Driver Assistance System: Parking Assistant, Driver Assistance System: Side Parking Aid, Park Distance Control (PDC) front and rear, rearview camera, Driver Assistance System: Trailer Assistant, Driver Assistance System: Reverse Assistant	Exterior equipment: Shadow-Line
BMW IconicSounds Electric (sound generator)	Petrol particulate filter (OPF)
Alloy wheels front/rear: 9.5x22 / 10.5x22 (double-spoke 742 M, Jet Black)	Model upgrade
Seat cover / upholstery: Sensafin man-made leather	Driver Assistance System: Parking and Collision Monitoring
Charging cable (5.0 m) with type 2 plug (mode 3, 22 kW)	Automatic tailgate operation
Low-emission according to Euro 6d emissions standard	Warning triangle
Anthracite headlining	BMW Live Cockpit Plus
DAB tuner (digital radio reception)	Drive type: xDrive (all-wheel drive)
Ambient lighting	Electric motor 145 kW (hybrid drive)
Satin aluminum roof rails	Metallic paintwork
Service system: Legal emergency call	Driving assistance system: Rear collision avoidance (rear collision prevention)
First aid kit / first aid kit	Body: 5-door
BMW front sports seats	M Sport
Heat/sun protection glazing	Alarm system
Personalization system (Personal eSIM)	Door sills with "BMW Individual" lettering
Acoustic pedestrian protection (exterior sound)	Service system: ConnectedDrive Services
Standard wheelbase	Tire pressure monitoring system
Heated front seats	

Image gallery





