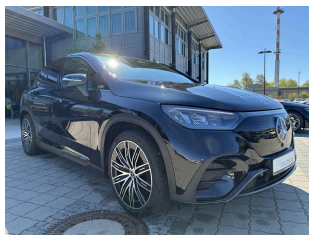


Mercedes-Benz EQE

350 AMG-Line 350

Electric - Automatic - 17533km - 08/2023

Ref 61197



[All images](#)

Mercedes-Benz EQE

350 AMG-Line 350

Electric - Automatic - 17533km - 08/2023

Ref 61197

Description

Make	Mercedes-Benz
Model	EQE
Description	350 AMG-Line 350
Mileage	17533 km
Type	Passenger car
Body type	SUV / Off-Road
Doors	5
Seats	5
Exterior color	Black
Interior color	Grey
Upholstery	Full leather

Technical

Fuel type	Electric	Gears	1
Gearbox	Automatic	Cylinders	0
Cylinder capacity	0 cc	Horse power	293 hp
Power KW	215 kw		
Drive train	Rear		

Dimensions

Weight empty	2430 kg
--------------	---------

Mercedes-Benz EQE

350 AMG-Line 350

Electric - Automatic - 17533km - 08/2023

Ref 61197

Registration and Warranty

First Registration 02-08-2023

Warranty start 02-08-2023

Battery Warranty start 02-08-2023

Options

Comfort

Seat driver electrical adjustable with memory	Glass open roof
Automatic climate control	Seat heating front
Seat heating rear	Steering wheel leather
Central locking	Luggage protection cover

Safety

Lights LED	Lane departure warning system
Airbag head	Airbags side
Tire pressure monitoring	

Infotainment

Navigation system

Mercedes-Benz EQE

350 AMG-Line 350

Electric - Automatic - 17533km - 08/2023

Ref 61197

Equipment

Burmester surround system	Tire repair kit (Tirefit)
PRE-SAFE system	Electric motor 215 kW (cont. 109 kW)
Heated windshield washer system	Alternating current (AC) charging system
Driver's side knee airbag	Infotainment system: Remote Service (Plus)
Charging cable for public charging stations	Tailgate with automatic opening and closing system
Multimedia system (Connect 20 Premium)	Acoustic environment protection (exterior sound)
Navigation system: hard disk navigation	Mirror package: Electr. folding exterior mirrors, interior mirror and exterior mirror left with automatic dimming, interior mirror with automatic dimming
Rear side windows and rear window darkened	LED High Performance headlights
Luggage compartment cover / roller blind	Charging cable with Schuko plug (8.0 m)
Smartphone integrated	Charging cable for public charging stations (8.0 m, 22 kW)
Night package: exterior mirrors painted black, darkened rear side windows and rear window	Special paint finish: Obsidian Black Metallic
Rear side airbag (sidebag)	Interior light package
Ramses communication module (5G)	Pre-installation for car sharing
Rear seat heating	9.5x21 alloy wheels (AMG, multi-spoke): alloy wheels
Seat covers / upholstery: Artico leatherette / two-tone microfiber	Wheelbase 3030 mm
Service system: MBUX Navigation Premium	Driving assistance system: Adaptive high beam assistant
Assistance package: exterior mirrors with Blind Spot Assist, cruise control	Head airbag system (windowbag)

with distance control / DISTRONIC Plus with Stop&Go function, driving assistance system: active lane departure warning system

Automatic air conditioning (Thermatic)

Equipment package: Advanced Plus: Keyless-Go package, Keyless-Go start system and central locking, Rear lid opens + closes automatically (Hands-Free-Access-System), USB Plus equipment package, Diamond-look radiator grille, Illuminated door sill trims, Sound system, Storage compartment under center console, Front sports seats, Ambient lighting (Plus) with direct light line, LM rims, LM rims

HV battery 90.5 kWh

Alternating current (AC) charging system with 22 kW charging power

Induction charging cradle for smartphone

Anti-theft package plus: interior protection for anti-theft alarm system

Parking package with 360° camera: Driving assistance system: active park assist, 360° camera system

Split/folding rear bench seat (40:20:40)

Body: 5-door

Direct current (DC) charging system

LED rear lights

Transmission for electric vehicle

Driving assistance system: Agility Select / Dynamic Select (driving mode switch)

AMG Line design and equipment line: styling package (AMG/exterior), bumpers in body color, AMG Line interior, illuminated door sill trims, dashboard in Artico man-made leather, stainless steel pedals in sport design, black headlining, AMG floor mats, front sports seats, electrically adjustable front lumbar supports, steering wheel (nappa leather, flattened at the bottom), steering wheel with shift paddles/buttons, galvanized

Infotainment system: Remote & Charging Services Premium: Infotainment system: Remote Services Premium

Memory package: front left seat electrically adjustable (with memory), front right seat electrically adjustable (with memory)

Drive type: rear-wheel drive

Panorama sunroof

Exterior door handles extendable / retractable, electric

Display package: Digital instrument display, central display (OLED)

Heated steering wheel

Tire pressure monitoring system

Comfort chassis (Agility Control)

Service system: Fingerprint scanner for MBUX

Charging cable with earthed plug

Heated front seats

Image gallery











