

# Hyundai Kona

Shine 65kWh 214 hp

Electric - Automatic - 16512km - 09/2024

Ref 59129



[All images](#)

# Hyundai Kona

## Shine 65kWh 214 hp

Electric - Automatic - 16512km - 09/2024

Ref 59129

### Description

Make	Hyundai
Model	Kona
Description	Shine 65kWh 214 hp
Mileage	16512 km
Type	Passenger car
Body type	Hatchback
Doors	5
Seats	5
Exterior color	Blue
Interior color	Grey
Upholstery	Full leather

### Technical

Fuel type	Electric	Gears	0
Gearbox	Automatic	Cylinders	0
Cylinder capacity	0 cc	Horse power	214 hp
Power KW	157 kw		
Drive train	Front		

### Dimensions

Weight empty	1773 kg	Max booth vol.	1300 l
Min booth vol.	466 l	Length	435 cm
Wheelbase	256 cm	Width	182 cm
Height	158 cm		

# Hyundai Kona

## Shine 65kWh 214 hp

Electric - Automatic - 16512km - 09/2024

Ref 59129

---

## Registration and Warranty

First Registration 09-09-2024

Warranty start 09-09-2024

Battery Warranty start 09-09-2024

## Options

### Comfort

Start and entry keyless	Automatic climate control
Electric tailgate	Seats front electrical adjustable
Seat heating front	Seat heating rear
Electric windows front	Electric windows rear
Wireless charging	Head-up display
Steering wheel heated	Steering wheel leather
Shift paddles	Sensor rain
Mirrors electrical adjustable	Mirrors heated
Automatically dimming interior mirror	Seats rear folding
Seats leather	Central locking
Steering power	Automatic gearbox
Outside temperature gauge	Ambient lighting
Armrest	Hill hold assist
Luggage protection cover	Sensor interior light
Mirrors electrical folding	Seats electric lumbar support

### Safety

Parking distance control	Cruise control adaptive
Lights LED	Parking assist 360° camera
Parking assist camera	Parking assist sensor front
Parking assist sensor rear	Traffic sign recognition
Lights automatic	Immobilizer

Speed limit control system  
High beam assist  
ESP  
Collision prevention system  
Emergency call  
Lane departure warning system  
Airbag driver  
Airbag curtain  
Airbags side

Lights LED daytime running  
ABS  
Blind spot monitor  
Drowsiness detection  
Emergency brake assist  
Electronic parking brake  
Airbag passenger  
Airbags rear  
Isofix

### **Infotainment**

Apple CarPlay / Android Auto  
DAB radio  
Sound system upgrade  
Radio  
USB  
Multifunctional steering wheel

Navigation system  
Bluetooth  
Touch screen  
Traffic information  
Voice control  
On-board computer

### **Extras**

Alloy wheels 19 inches  
Tinted windows  
Roof rack  
Single phase charging cable socket

Alloy wheels  
Tires all season  
Metallic color  
Heat pump

# Hyundai Kona

**Shine 65kWh 214 hp**

Electric - Automatic - 16512km - 09/2024

Ref 59129

---

## Equipment

## Image gallery















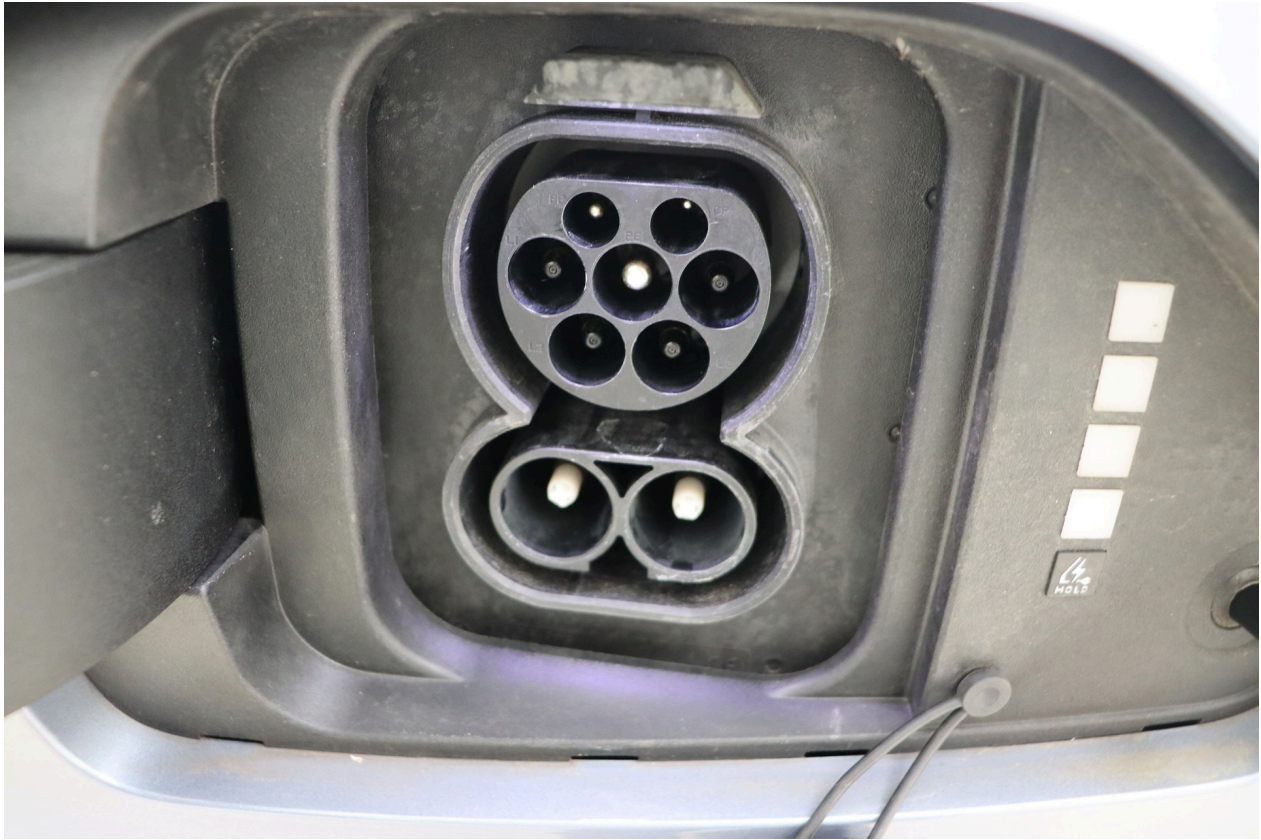










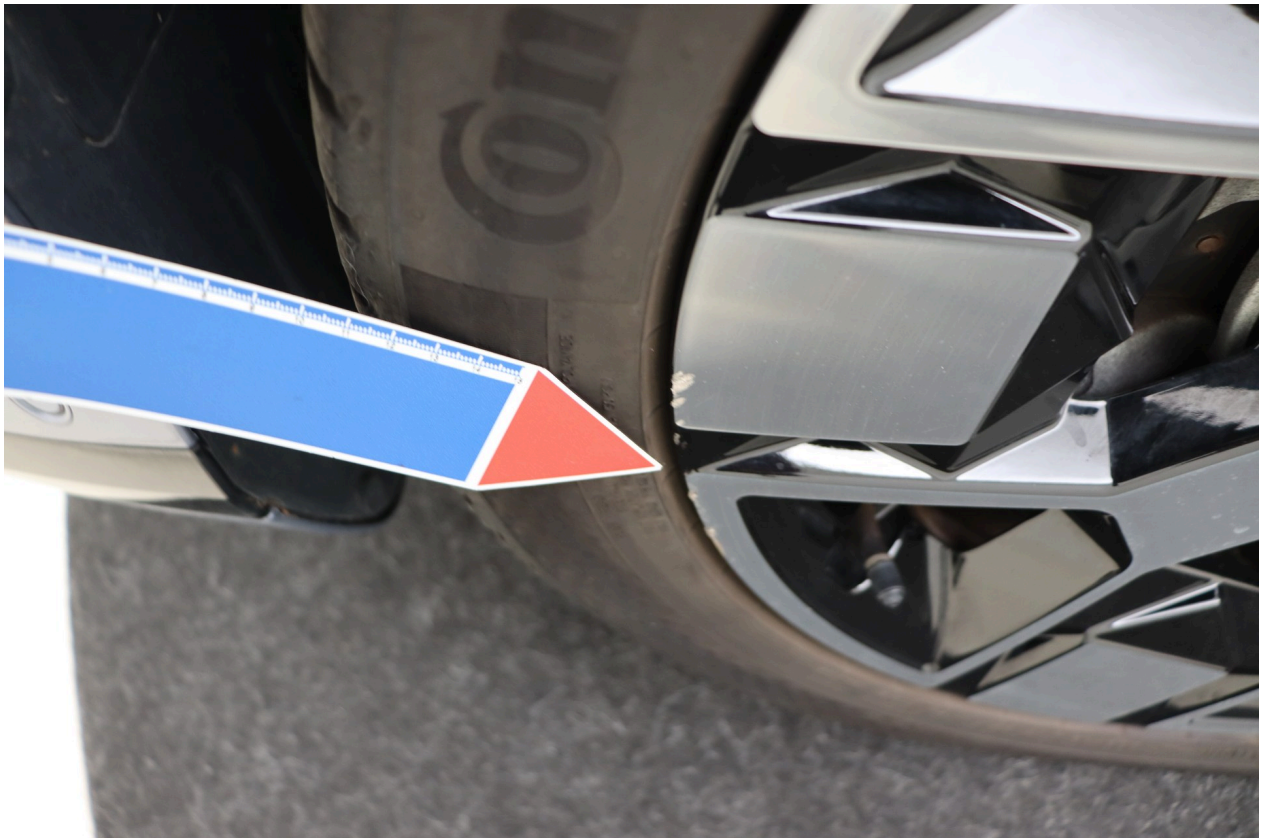


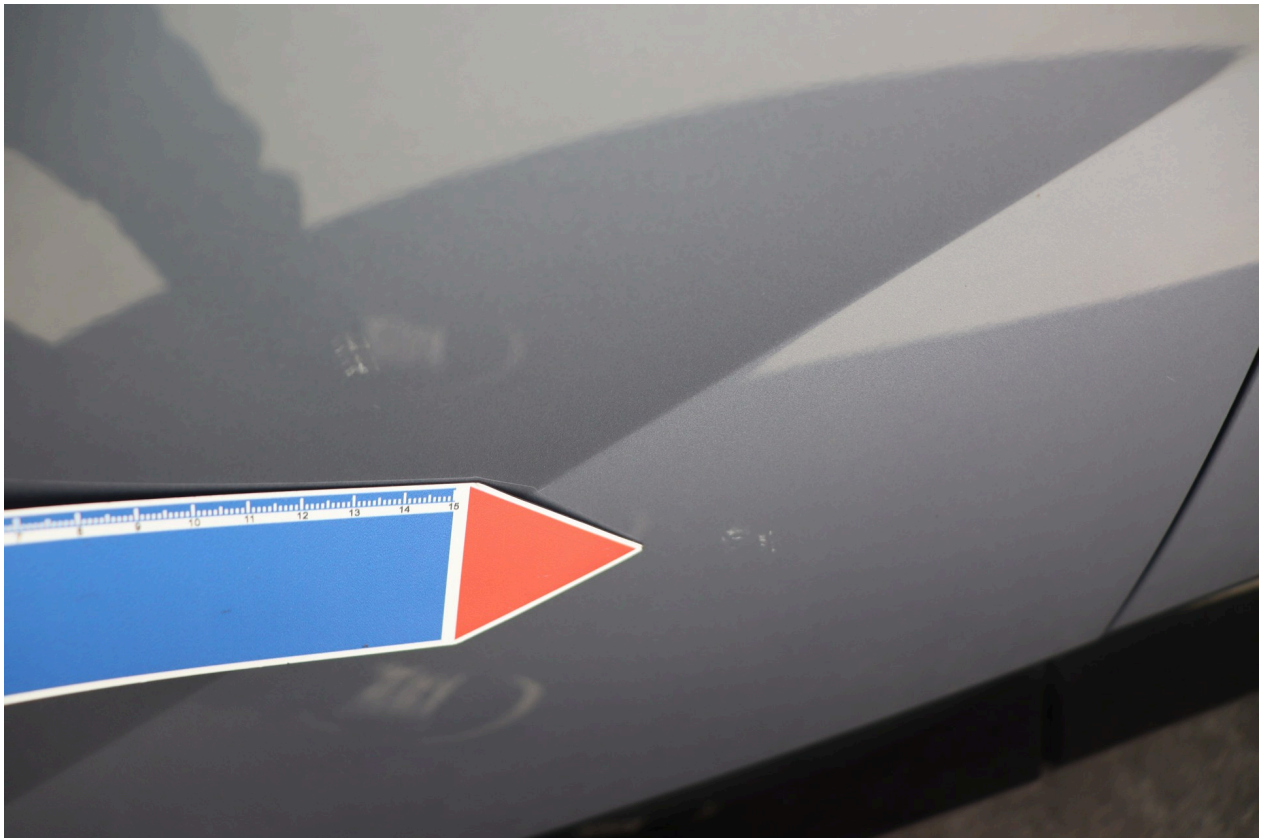


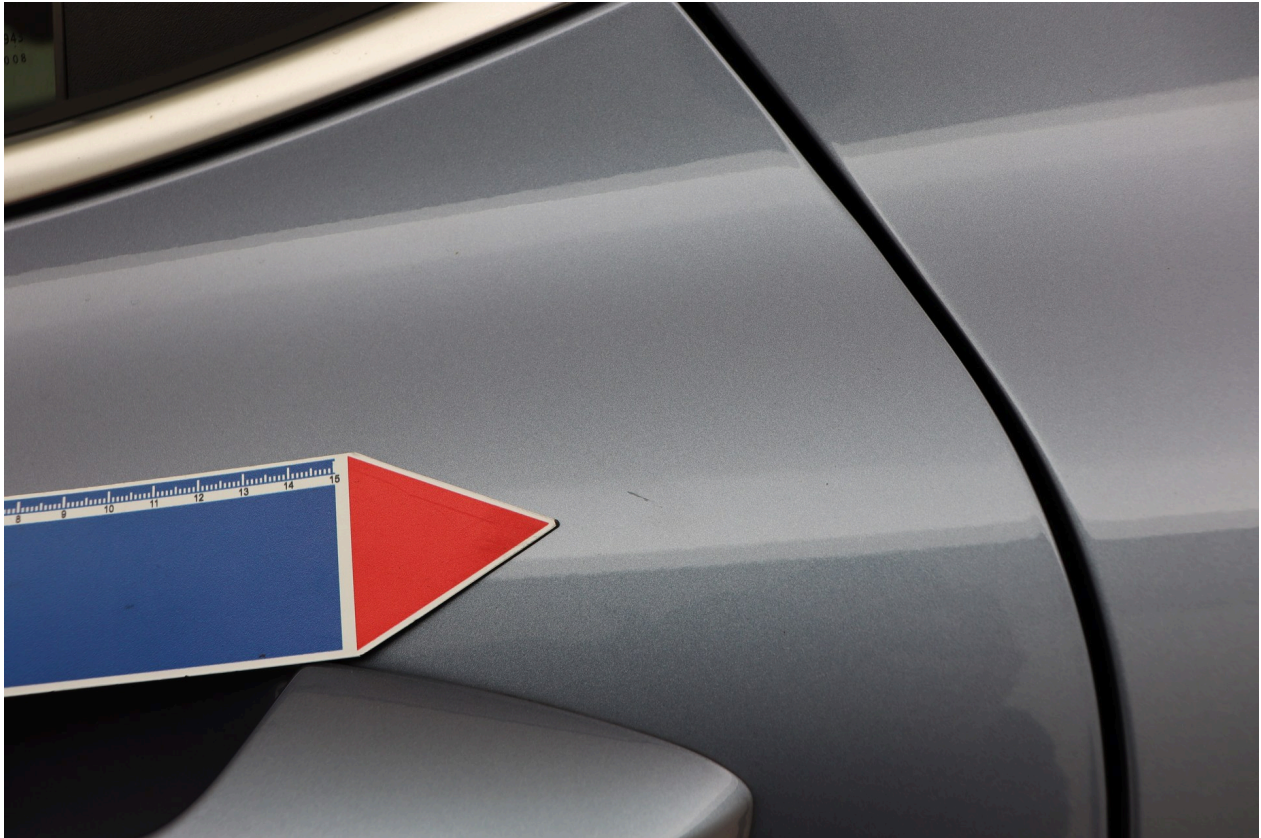


















# BATTERY CERTIFICATE PREVIEW

CERTIFICATE NUMBER: 3F513FC3-CDF5-43CD-\*\*\*\*-\*\*\*\*\*



<b>VEHICLE</b>	<b>BRAND:</b> Hyundai	<b>MILEAGE:</b> 16,513 km	<b>EXECUTED BY:</b> Cars International
	<b>MODEL:</b> Kona EV - 65,4 kWh	<b>DATE AND TIME:</b> 15/04/2026, 13:03	



**STATE OF HEALTH (SOH)**

## 98.7 %

**ENERGY** 65kWh | 65kWh

**WLTP RANGE** 507km | 514km

**CHECKS**

Battery Management System (BMS)	✓
Battery Sensor	✓
Battery Measurements	✓
Battery Cell Voltages	✓
Vehicle Communication	✓

**EVALUATION**

**EXCELLENT HEALTH - NO ABNORMALITIES DETECTED**

Based on the detailed battery diagnostics performed with the AVILOO FLASH Test, we hereby certify that the drive battery of this vehicle is in excellent condition. The drive battery is therefore officially AVILOO Certified.

*Marcus Berger*  
Dr. Marcus Berger, CEO



For more information about this test, visit [aviloo.com/ft-preview](http://aviloo.com/ft-preview)  
Scan the QR code to get the original report