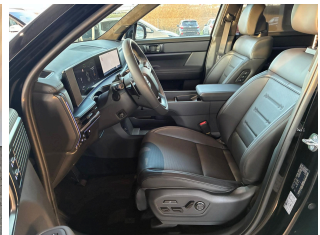
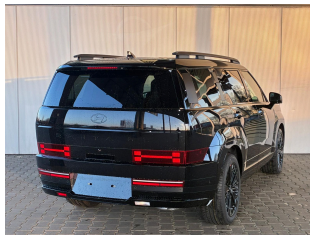


Hyundai Santa Fe

Black Line PHEV (Plug-in Hybrid) 1.6L

Plug-in Hybrid Gasoline - Automatic - 15km - 05/2026

Ref 52794



[All images](#)

Hyundai Santa Fe

Black Line PHEV (Plug-in Hybrid) 1.6L

Plug-in Hybrid Gasoline - Automatic - 15km - 05/2026

Ref 52794

Description

Make	Hyundai
Model	Santa Fe
Description	Black Line PHEV (Plug-in Hybrid) 1.6L
Mileage	15 km
Type	Passenger car
Body type	SUV / Off-Road
Doors	5
Seats	7
Exterior color	Black
Interior color	Grey
Upholstery	Full leather

Technical

Fuel type	Plug-in Hybrid Gasoline		
Gearbox	Automatic	Gears	6
Cylinder capacity	1598 cc	Cylinders	0
Power KW	190 kw	Horse power	259 hp
Drive train	AllWheel		

Dimensions

Weight empty	2219 kg
--------------	---------

Hyundai Santa Fe

Black Line PHEV (Plug-in Hybrid) 1.6L

Plug-in Hybrid Gasoline - Automatic - 15km - 05/2026

Ref 52794

Registration and Warranty

First Registration 01-05-2026

Warranty start 23-03-2026

Options

Comfort

Automatic climate control	Electric tailgate
Seat heating front	Seat heating rear
Seats ventilation front	Keyless entry
Wireless charging	Head-up display
Steering wheel heated	Steering wheel leather
Shift paddles	Sensor rain
Mirrors electrical adjustable	Mirrors heated
Automatically dimming interior mirror	Seats rear folding
Seats manual lumbar support	Central locking
Ambient lighting	Hill hold assist
Sensor interior light	Mirrors electrical folding

Safety

Cruise control	Cruise control adaptive
Lights LED	Parking assist sensor front
Parking assist sensor rear	Traffic sign recognition
Alarm	Lights LED daytime running
High beam assist	ABS
ESP	Traction control
Blind spot monitor	Emergency brake assist
Lane departure warning system	Electronic parking brake
Isofix	

Infotainment

Apple CarPlay / Android Auto
DAB radio
Sound system upgrade
Radio
Multifunctional steering wheel

Navigation system
Bluetooth
Touch screen
USB
On-board computer

Extras

Alloy wheels
Roof rack

Tinted windows
4x4

Hyundai Santa Fe

Black Line PHEV (Plug-in Hybrid) 1.6L

Plug-in Hybrid Gasoline - Automatic - 15km - 05/2026

Ref 52794

Equipment

Luggage compartment cover	Heated exterior mirrors
ESP	7 head restraints
Color glazing	Power steering
Heated front seats	Multifunction steering wheel
Electric front lumbar supports	Keyless Entry
Shift paddles on the steering wheel	360 degree camera/Area View
Electric tailgate	LED headlights
Driver's seat with memory function	Drowsiness warning system
Electric parking brake	Leather interior
LED rear lights	20-inch wheels
Apple Car Play	Traffic sign recognition
On-board computer	Electrically adjustable exterior mirrors
DAB receiver	Navigation system
Radio	Front and rear armrests
Induction charging station	Android Auto
Bluetooth	LM rims
Light sensor	Rear seat heating
Sliding rear bench seat	Leather steering wheel
Emergency brake assist (F.A.)	Electric windows front and rear
Automatically dimming interior mirror	Head-up display (HUD)
Electrically folding exterior mirrors	Lane departure warning
Height-adjustable steering wheel	Virtual Cockpit
Electric adjustment of the front seats	Adaptive cruise control
Split rear bench seat	Touchscreen
Steering wheel heating	Central locking with radio
Roof rails	Keyless-Go
Front parking aid	2-zone automatic air conditioning

Seat ventilation	Metallic
Ambient lighting	Distance warning system
LED daytime running lights	Rear parking aid
Driving profile selection (Drive Mode Select)	Area monitoring system (Front Assist)
Passenger airbag can be deactivated	USB connection
High beam assistant (Light Assist)	Child seat preparation (ISOFIX)
6 Airbags	Darkened side/rear window
ABS	Rain sensor
Swerve assist and turn assist	All-wheel drive
Alarm system	Sound system

Image gallery

















